

ENTREPRENEURSHIP ECOSYSTEM: KEY PLAYERS IN NIGERIA

JUNE 2017

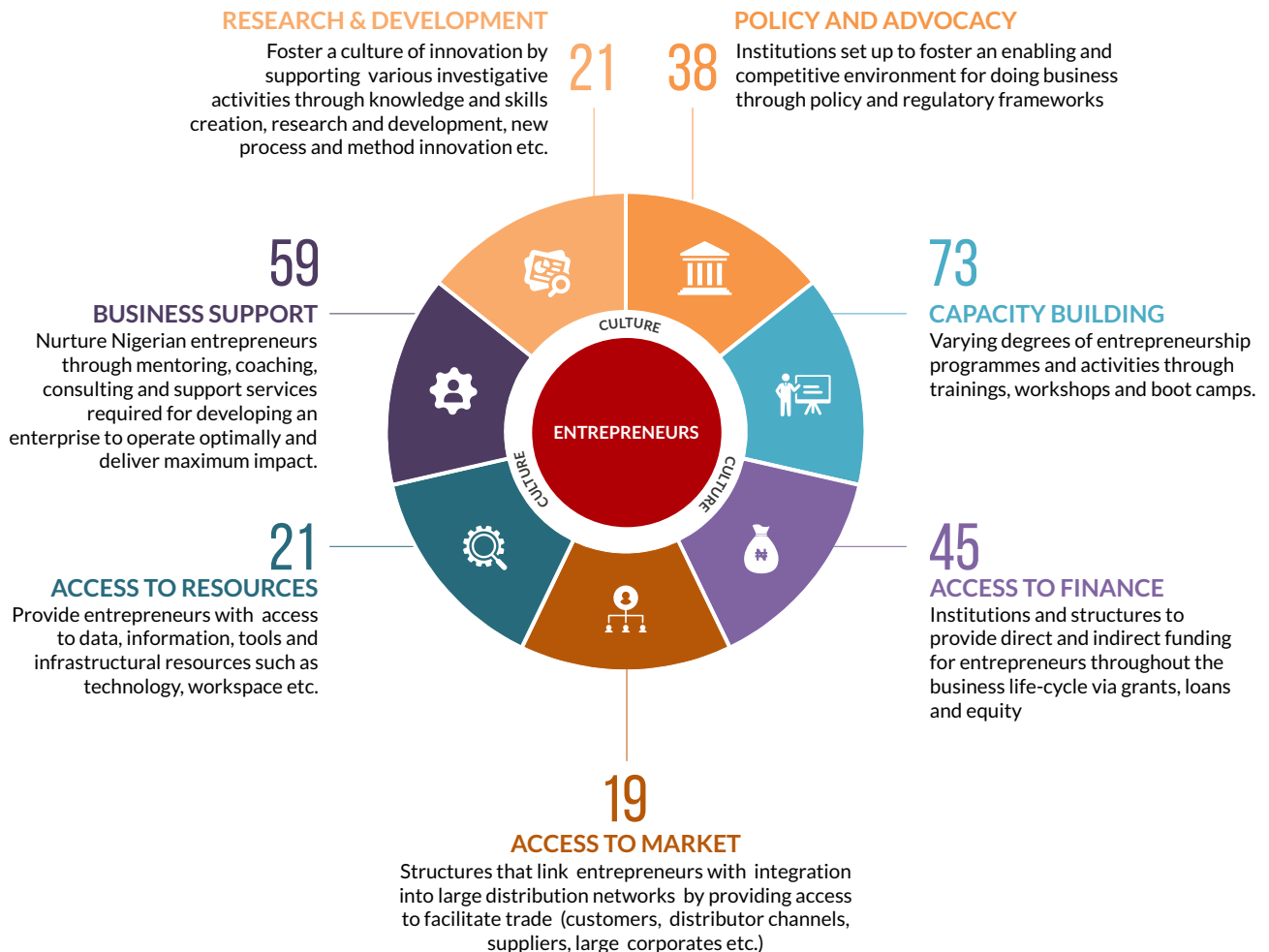
CONTENT

OVERVIEW,	1
POLICY AND ADVOCACY,	2
CAPACITY BUILDING,	4
ACCESS TO FINANCE,	6
ACCESS TO MARKET,	8
ACCESS TO RESOURCES,	9
BUSINESS SUPPORT,	10
RESEARCH & DEVELOPMENT,	11

Download a copy of this report at
www.fatefoundation.org/ecosystemkeyplayers

OVERVIEW

This document provides an overview of Key Players noted in the Nigerian Entrepreneurship Ecosystem along the lines of the Ecosystem Determinants defined in the 2016 Nigerian Entrepreneurship Ecosystem Research Report developed by FATE Foundation in Partnership with KPMG Nigeria. We plan to constantly update this list and welcome your feedback.



TOTAL NUMBER OF PLAYERS IN THE ECOSYSTEM - 276*

**These numbers are constantly being updated*

POLICY & REGULATION

GOVERNMENT

Abuja Enterprise Agency (AEA)*

Central Bank of Nigeria (CBN)

Corporate Affairs Commission (CAC)

Enabling Business Environment Secretariat (EBES)

Federal Inland Revenue Service (FIRS)

Federal Ministry of Industry, Trade and Investment (FMITI)

Local Government Councils

National Agency for Food and Drug, Administration and Control (NAFDAC)

National Assembly

National Assembly Business Environment Roundtable (NASSBER)*

National Information Technology Development Agency (NITDA)

National Office for Technology Acquisition and Promotion (NOTAP)

Nigerian Export Promotion Council (NEPC)

Nigerian Investment Promotion Council (NIPC)

Office of Entrepreneurship and Innovation, Office of the Vice President

Presidential Enabling Business Environment Council (PEBEC)

Small and Medium Enterprise Development Agency of Nigeria (SMEDAN)

Standards Organization of Nigeria (SON)

State Chambers of Commerce & Industry

State Houses of Assembly

State Internal/ Inland Revenue Bodies

**Play policy advocacy roles*



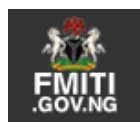
Small & Medium
Enterprises
Development
Agency of
Nigeria



CORPORATE AFFAIRS
COMMISSION
COMPANY REGISTRATION PORTAL



Ministry of Science and Technology
NOTAP
National Office for Technology
Acquisition and Promotion



FMITI
.GOV.NG



aea
ABUJA
ENTERPRISE
AGENCY



CENTRAL BANK OF NIGERIA



POLICY & REGULATION

PRIVATE SECTOR GROUPS & ASSOCIATIONS

Association of Micro Entrepreneurs in Nigeria (AMEN)*

Association of Small Business Owners of Nigeria (ASBON)*

Center for International Private Enterprise*

Commonwealth Alliance of Young Entrepreneurs (CAYE) West Africa*

Deloitte Nigeria*

FATE Foundation*

International Labour Organization (ILO)

Nigerian Association of Chambers of Commerce, Industry, Mines and Agriculture (NACCIMA)*

Nigerian Association of Small and Medium Enterprises (NASME)*

Nigerian Association of Small Scale Industrialists (NASSI)*

Nigerian Economic Summit Group (NESG)*

NECA's Network of Entrepreneurial Women (NNEW)*

Nigeria's Employers Consultative Association (NECA)*

State Chambers of Commerce and Industry*

DEVELOPMENT FINANCE INSTITUTIONS (DFIS)

Enhancing Nigerian Advocacy for a Better Business Environment (ENABLE), Department for International Development (DFID)*

Growth & Employment in States (GEMS) 3, DFID*

Policy Development Facility Programme, DFID*

**Play policy advocacy roles*



CAPACITY BUILDING

GOVERNMENT & DFIS

Abuja Enterprise Agency (AEA)
 Amnesty Programme
 Bank of Industry (BOI)
 Central Bank of Nigeria's Enterprise Development Centres
 GIZ Nigeria
 International Finance Corporation (IFC) Business Edge
 Lagos State Employment Trust Fund (LSETF)
 Office for ICT Innovation & Entrepreneurship (OIIE)
 Small and Medium Enterprises Development Agency of Nigeria (SMEDAN)
 YouWin Connect

ACADEMIA

Center for Entrepreneurship and Innovation (CEI), University of Ibadan
 Enterprise Development Center (EDC), Pan Atlantic University
 Lagos Business School (LBS), Pan Atlantic University
 Kaduna Business School (KBS)

NOTE

List excludes For-Profit MSME Capacity Building Providers
 Some Commercial Banks have specialised Capacity Building Programs targeted at MSMEs such as the Access Bank W Initiative, Diamond BET, EcoBank SME Club, FCMB SME Capacity Building Initiative, Fidelity Managed SMEs, First Bank, GTBank SME Market Hub, Stanbic IBTC and the Sterling MSME Academy.

NON- PROFIT/FOUNDATION

Academy for Entrepreneurial Studies (AES)
 Afterschool Graduate Development Centre (AGDC)
 Business Academies of Faith Based Organizations (FBOs)*
 Centre for Entrepreneurial Development Lagos (CEDL)
 Cherie Blair Foundation
 Enactus
 Empretec
 FATE Foundation
 Generation Enterprise
 Institute of Entrepreneurial Studies (IES)
 Junior Achievement Nigeria
 LEAP Africa
 MTN Foundation
 The Bridge Leadership Foundation
 Partnership Initiatives in the Niger Delta
 Private Sector Health Alliance of Nigeria (PHN)
 Quantum Business School & Entrepreneurship Center
 She Leads Africa
 Tony Elumelu Foundation
 Women in Management, Business and Public Service (WIMBIZ)

**Most religious institutions organise capacity building programs on entrepreneurship all through the year*



CAPACITY BUILDING

INCUBATORS & ACCELERATORS

[440NG](#)

[BD Hub](#)

[Blue Hub](#)

[Co- Creation Hub \(CcHub\)](#)

[CoLab](#)

[Delta State Innovation Hub](#)

[Enspire Hub](#)

[Focus Hub](#)

[Founders Hub](#)

[Hebron StartUp Labs](#)

[iDEA Hub](#)

[Ideation Hub](#)

[Leadpath Nigeria](#)

[NHub](#)

[OlotuSquare](#)

[Passion Incubator](#)

[ROAR Nigeria Hub](#)

[Root Hub](#)

[ScaleUp Lab](#)

[She Leads Africa](#)

[SPARK](#)

[Start Innovation Hub](#)

[StartPreneurs](#)

[StoneBricks Hub](#)

[Technology Development for Poverty Alleviation Initiative \(TD4PAI\)](#)

[Technology Incubation Center*](#)

[The Tangent Eco- Innovation Hub](#)

[Ventures Platform](#)

[We Hub](#)

[Wenovation Hub](#)

TRADE GROUPS / ASSOCIATIONS

[Association of Micro Entrepreneurs in Nigeria \(AMEN\)](#)

[Association of Small Business Owners of Nigeria \(ASBON\)](#)

[Equipment Leasing Association of Nigeria \(ELAN\)](#)

[Nigerian Association of Chambers of Commerce, Industry, Mines and Agriculture \(NACCIMA\)](#)

[Nigerian Association of Small and Medium Enterprises \(NASME\)](#)

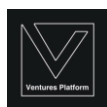
[Nigerian Association of Small Scale Industrialists \(NASSI\)](#)

[NECA's Network of Entrepreneurial Women \(NNEW\)](#)

[Nigeria's Employers Consultative Association \(NECA\)](#)

[State Chambers of Commerce and Industry](#)

**Twenty-Seven (27) centers across the country set up by the National Board for Technology Incubation (NBTI)*



ACCESS TO FINANCE

DEBT

Afterschool Graduate Development Centre (AGDC)

Bank of Agriculture (BOA)

Bank of Industry (BOI)

Central Bank of Nigeria (CBN)

Commercial Banks in Nigeria*

Dangote Foundation

GroFin

Growth and Employment in States (GEMS) 3, DFID

International Finance Corporation (IFC)

International Fund for Agricultural Development (IFAD)

Kaduna Start-up Entrepreneurship Programme (KADSTEP)

Lagos State Employment Trust Fund (LSETF)

Lydia

Market Moni (Government Enterprise and Empowerment Program)

Nigerian Export- Import Bank (NEXIM)

Microfinance Banks in Nigeria*

Nigeria Incentive- Based Risk Sharing System for Agricultural Lending (NIRSAL)

Oxfam

United States Agency for International Development (USAID)

ANGEL INVESTORS/ EQUITY/VENTURE CAPITAL

Alitheia Capital

GreenHouse Capital

Growth Capital

Doreo Partners

Echo VC

Select Incubators & Accelerators e.g.

CcHub & Ventures Platform

Lagos Angel Network (LAN)

LeadPath Nigeria

Omidyar Network

Private Sector Health Alliance of Nigeria (PHN)

Singularity Investments

TechLab Africa

VC4Africa

**Licensed Commercial and Microfinance Banks in Nigeria have loan products for micro, small and medium enterprise. Some of these products are also facilitated through special government designated funds such as CBN MSMEDF programme.*



ACCESS TO FINANCE

GRANTS*

Business Innovation Growth

GIZ Nigeria

Incubators & Accelerators

Shell LiveWire

Tony Elumelu Foundation

Youth Enterprise With Innovation in Nigeria (YOUWIN)

CREDIT RATING / COLLATERAL REGISTRY

CRC Credit Bureau

National Collateral Registry of Nigeria

XDS Credit Bureau

CROWDFUNDING

Farmcrowdy.com

Imeela.com

Next-economy.com

** A number of Corporates and Financial Institutions frequently organise competitions to provide grants for aspiring entrepreneurs and small businesses*



ACCESS TO MARKET

GOVERNMENT & DFIS

Growth and Employment in States (GEMS) 4, DFID

Small and Medium Enterprises Development Agency of Nigeria (SMEDAN)

Nigerian Incentive Based Risk Sharing System for Agricultural Lending (NIRSAL)

Nigerian Investment Promotion Council (NIPC)

Nigerian Export- Import (NEXIM) Bank

Nigerian Export Promotion Council (NEPC)

Women in Investment and Enterprise (WinIE), Federal Ministry of Industry, Trade and Investment

United States Agency for International Development (USAID)

PRIVATE

Africa Exchange Holdings Limited (AFEX)

Babban Gona

E-Commerce Platforms

Growing Business Foundation (GBF)

Institute of Export Operations Management (IOEM)

Manufacturers Association of Nigeria (MAN)

Market Square Africa

Quintessential Business Women Association

Private Sector Health Alliance of Nigeria (PHN)

State Chambers of Commerce

Wicklow Group



ACCESS TO RESOURCES

GOVERNMENT

Abuja Enterprise Agency (AEA)

MSME Clinics

Office for ICT Innovation & Entrepreneurship (OIIE)

VIRTUAL INFORMATION PORTALS

BIG Portal bigportal.org.ng

Kaduna Business Registry Portal
eregistry.kdsg.gov.ng

MSMEHub by FATE Foundation msmehub.org

SME Biz Info smebizinfo.com

SME Toolkit nigeria.smetoolkit.org/nigeria

SMEDAN Credit Information Portal
smedan.gov.ng/cip

Starta the.starta.com

TechPoint techpoint.ng

Ventures Africa venturesafrica.com

PRIVATE SECTOR

Equipment Leasing Association of Nigeria (ELAN)

International Fund for Agriculture and Development (IFAD)

Center for International Private Enterprise (CIPE)

Aspen Network of Development Entrepreneurs (ANDE)

MainOne

Africa Exchange Holding Limited (AFEX)

WICKLOW Group

National Association of Small and Medium Enterprises (NASME)

INCUBATORS & ACCELERATORS*

* Listed on Page 5



BUSINESS SUPPORT

GOVERNMENT

Abuja Enterprise Agency (AEA)

Amnesty Programme

Bank of Industry (BOI) (through approved BDSPs)

Central Bank of Nigeria's Enterprise Development Centres

Office for ICT Innovation & Entrepreneurship (OIIE)

Small and Medium Enterprises Development Agency of Nigeria (SMEDAN)

YouWin Connect

TRADE GROUPS/ ASSOCIATIONS

Association of Micro Entrepreneurs in Nigeria (AMEN)

Association of Small Business Owners of Nigeria (ASBON)

Nigerian Association of Chambers of Commerce, Industry, Mines and Agriculture (NACCIMA)

Nigerian Association of Small and Medium Enterprises (NASME)

Nigerian Association of Small Scale Industrialists (NASSI)

NECA's Network of Entrepreneurial Women (NNEW)

Nigeria's Employers Consultative Association (NECA)

State Chambers of Commerce and Industry

ACADEMIA

Enterprise Development Center, (EDC) Pan Atlantic University

Kaduna Business School (KBS)

NON- PROFITS/ SOCIAL ENTERPRISES

Accounting Hub

Doreo Partners

Cherie Blair Foundation

DIYLaw

Incubators & Accelerators*

FATE Foundation

Faith Based Organizations (FBOs)

Generation Enterprise

Growing Business Foundation

Private Sector Health Alliance of Nigeria (PHN)

She Leads Africa

Tony Elumelu Foundation

Women in Management, Business and Public Service (WIMBIZ)

NOTE

List excludes For-Profit MSME Business Support Scheme Providers

Some Commercial Banks have specialised Capacity Building Programs targeted at MSMEs such as the Access Bank W Initiative, Diamond BET, EcoBank SME Club, FCMB SME Capacity Building Initiative, Fidelity Managed SMEs, First Bank, GTBank SME Market Hub, Stanbic IBTC and the Sterling MSME Academy.

* Listed on Page 5



RESEARCH & DEVELOPMENT

GOVERNMENT

Abuja Enterprise Agency (AEA)
 International Institute of Tropical Agriculture (IITA)
 Federal Institute of Industrial Research, Oshodi (FIIRO)
 National Bureau of Statistics (NBS)
 Doing Business Unit, World Bank
 Small and Medium Enterprise Development Agency (SMEDAN)
 National Board for Technology Incubation (NBTI)

DEVELOPMENT/NON- PROFIT ORGANISATION

Aspen Network of Development Entrepreneurs (ANDE)
 Enhancing Financial Innovation & Access (EFInA)
 FATE Foundation
 Global Entrepreneurship Monitor (GEM)
 TOMB Foundation

ACADEMIA

Center for Entrepreneurship and Innovation (CEI), University of Ibadan
 Institute of Entrepreneurship and Development Studies
 Enterprise Development Center (EDC), Pan Atlantic University

FOR- PROFIT/CORPORATES

Agusto & Co
 Dalberg Global Development Advisors
 Deloitte Nigeria
 Enhancing Financial Innovation & Access (EFInA)
 Institute of Entrepreneurship and Development Studies
 KPMG Nigeria





OUR CONTACT:

FATE Foundation

Lagos: 1st Floor Lagos Water House, Ijora, Lagos. Phone: +234 817 874 4722

Port- Harcourt: 141, Olu Obasanjo Road, Port Harcourt, Rivers.

     @FATEFoundation  www.fatefoundation.org